

LAKE REGION COURSE – Go The Distance Cross Country League – Saturday, September 13th, 2025

HALF MILE COURSE



The finish line is an estimate. It will be determined after all the stakes and cones are put in.

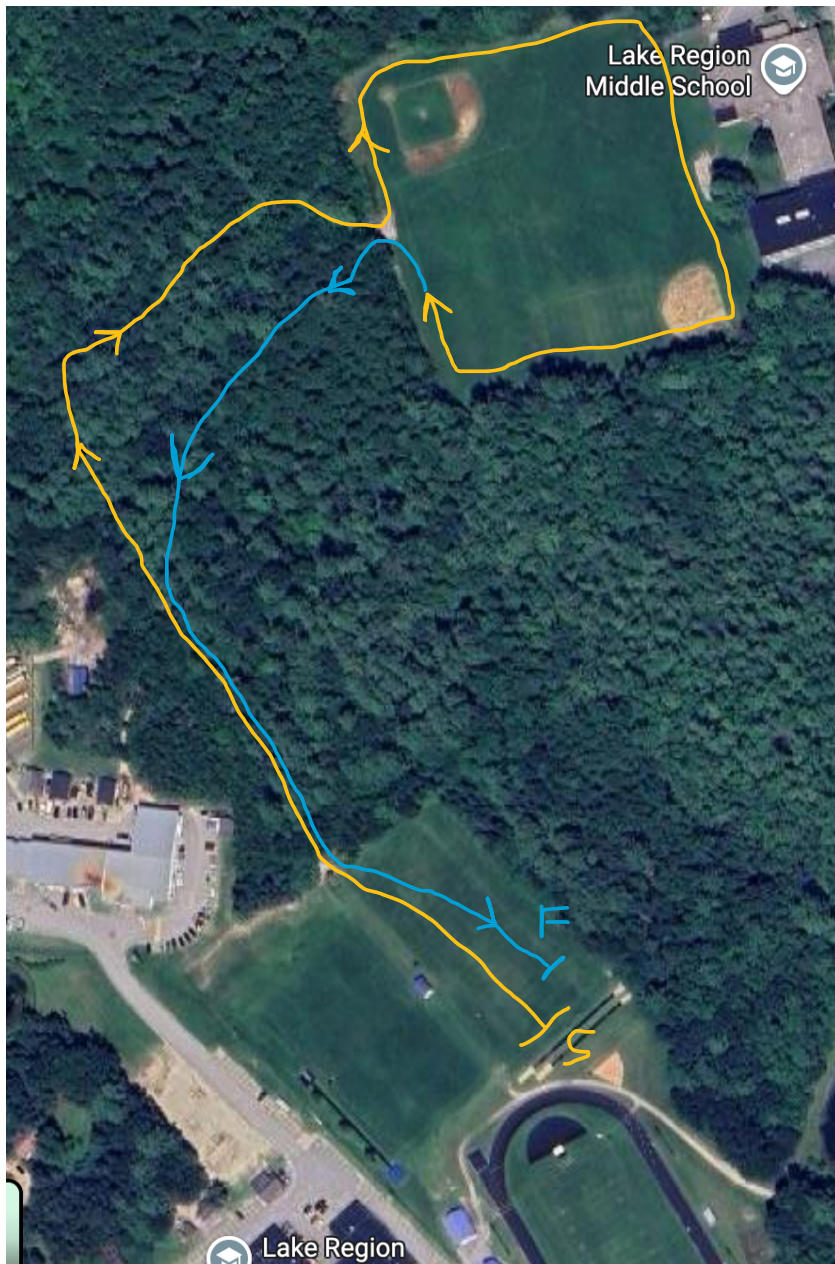
Course walk for all races is at 12:30 PM.

Race order, starting at 1:00 PM:

- 8 & under HALF MILE
- 8 & under ONE MILE
- 9 & over ONE MILE
- 9 & over TWO MILES

LAKE REGION COURSE – Go The Distance Cross Country League – Saturday, September 13th, 2025

ONE MILE and TWO MILE COURSES



The finish line is an estimate. It will be determined after all the stakes and cones are put in to make it as close to 1.0 miles as possible. The two-mile runners will do the one mile course, turn around at the “finish” line, do the course again, but finish at the starting line. We will make sure every runner understands that before starting their race.